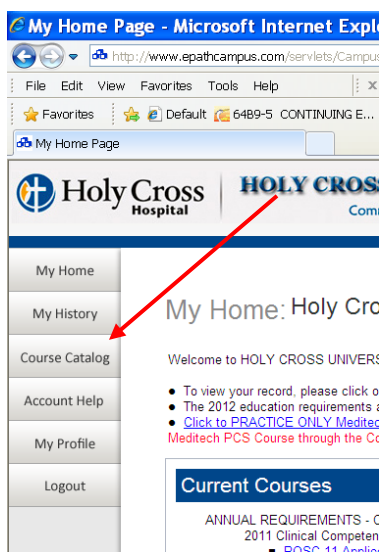
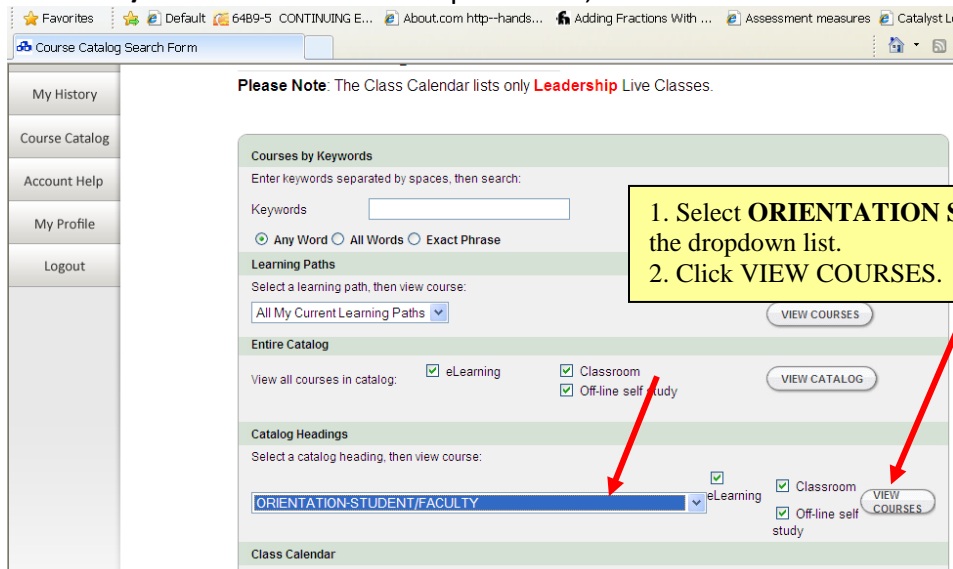


Student Instructions for Navigating through EPath

1. From the Internet, go to www.holycrossuniv.com
 - Click on the “**Students/Faculty**” link.
2. Click on the **First Time Registration** button.
3. Complete registration form making sure to provide information on the empty fields.
 - Create your **Learner ID**-minimum of 6 characters and case-sensitive
 - Create your **Password** (keep a record of your Learner ID and Password)
4. Click **Register**. This takes you to the **My Home** page.
 - Make sure **your name** appears at the top of the page.
5. For all courses required of students, click on “**Course Catalog**” on the left pane.



6. On the **Course Catalog Search Form**, under **Catalog Headings**, select “**ORIENTATION STUDENT/FACULTY**” from the dropdown list, and then click **VIEW COURSES**.



7. On the **Course Catalog Search Results** page, click on the required course. Student courses begin with a prefix **STU.YY**

Course Catalog Search Results

Holy Cross Hospital | HOLY CROSS UNIVERSITY
Committed to Lifelong Learning...

My Home
My History
Course Catalog
Account Help
My Profile
Logout

Course Catalog Search Results

SEARCH AGAIN

Legend: eLearning Classroom eConference Off-line Self-Study

ORIENTATION-STUDENT/FACULTY

Student/Faculty Orientation 2012 ALL STUDENTS/FACULTY

- [STU.12 HCH Orientation Enrichment](#)
- [STU.12 Risk Management](#)
- [STU.12 Corporate Compliance](#)
- [STU.12 Direct Healthcare Provider Competency CLINICAL/Healthcare Provider/Faculty Only](#)
- [STU.12 Code of Conduct and Confirmation](#)
- [STU.12 Nondisclosure Agreement](#)
- [CBT.11 Meditech PCS Course \(Nursing Only\)](#)
- [CBT.11 Meditech PCS Post Test \(Nursing only\)](#)

SEARCH AGAIN

Legend: eLearning Classroom eConference Off-line Self-Study

8.

Course Details - Microsoft Internet Explorer provided by Holy Cross Health Ministries

http://www.epathcampus.com/servlets/Campus?disp=CourseDetails&courseID=75446&sortResults=null&collegeID=13275

File Edit View Favorites Tools Help

Course Details

Holy Cross Hospital | HOLY CROSS UNIVERSITY
Committed to Lifelong Learning...

My Home
My History
Course Catalog
Account Help
My Profile

STU.12 HCH Orientation Enrichment

2012 Holy Cross Hospital

Click Register for this course.

Course Registration Information

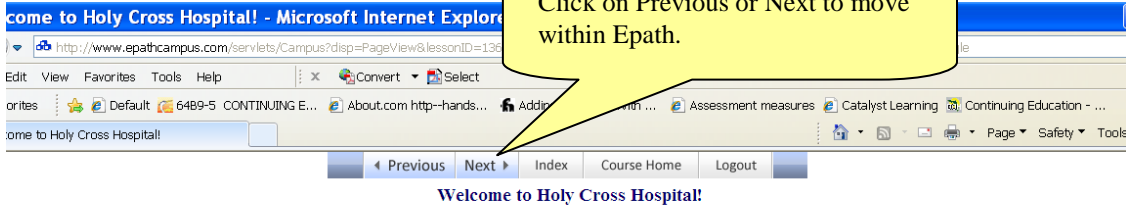
You are not currently registered for this course.
[Register for this course](#)

BACK TO COURSE CATALOG

9.

10.

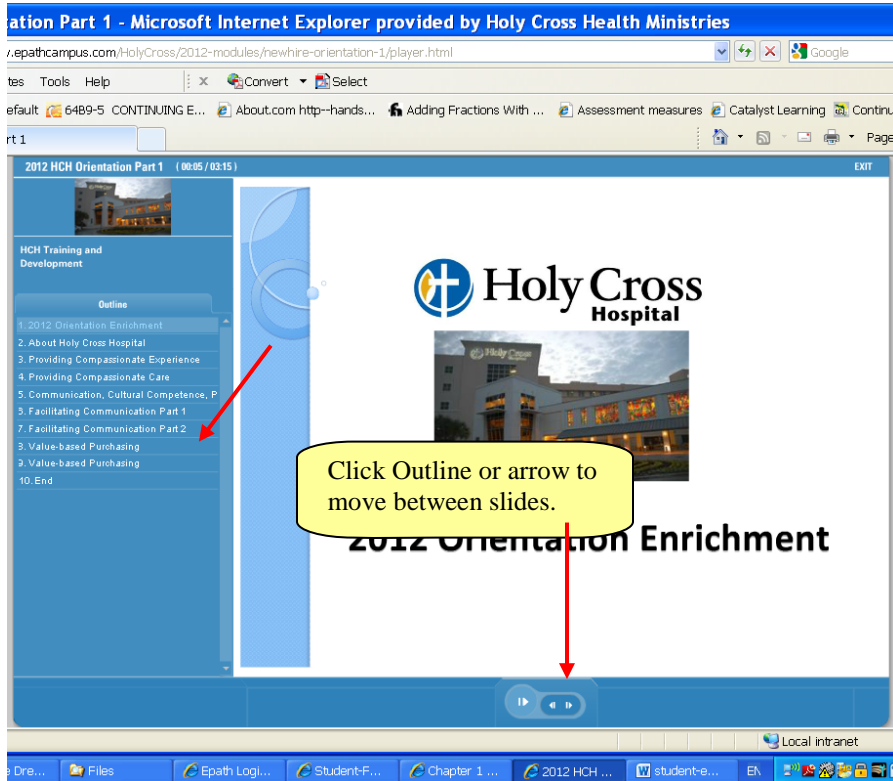
11.



This Orientation Module is required of **ALL Students and Faculty** from schools affiliated with Holy Cross Hospital and must be completed prior to clinical rotation.

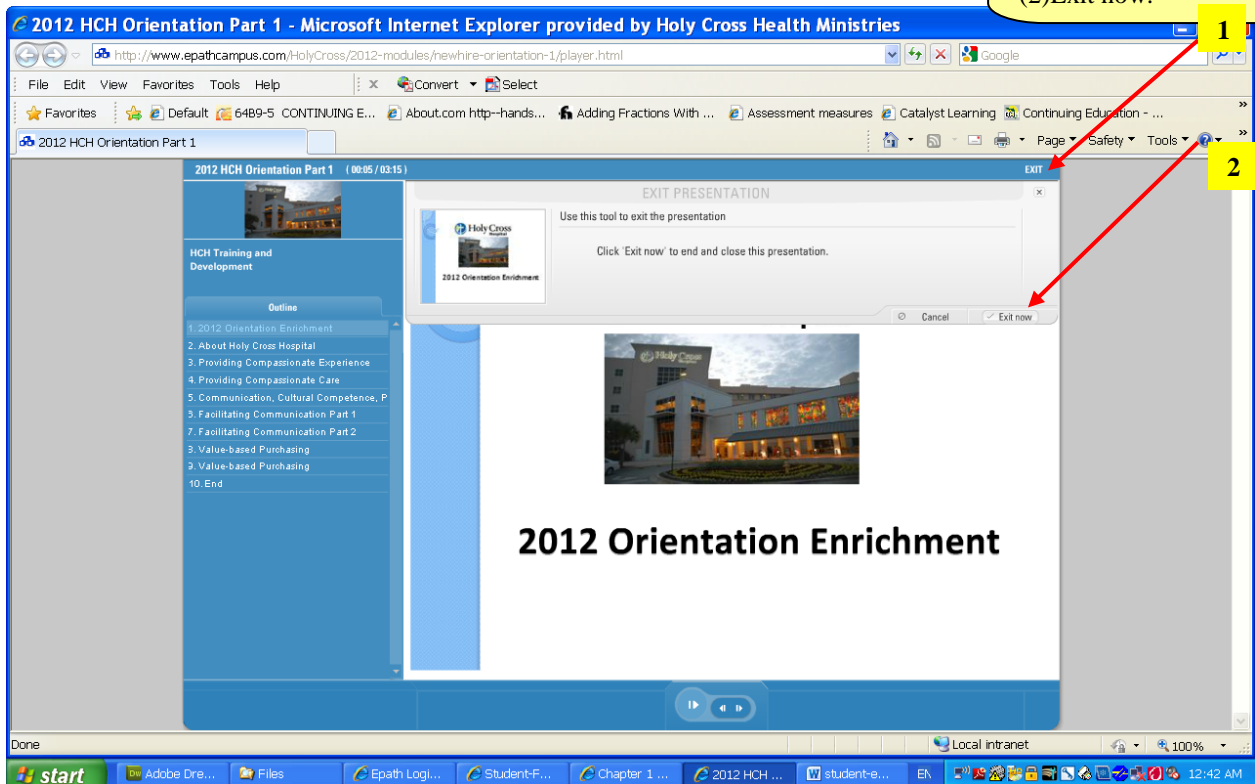
All four (4) chapters must be completed. Course completion will be recorded after successful completion of a post test at the end of the module.

12.



13. To close the program, click **Exit** then **Exit now**.

To close program, click
(1)EXIT then
(2)Exit now.



14. To print your transcript, click on **"My History."**

- The **My History** tab can also be found by returning to the **Course Catalog**.
- To print your transcript from **"My History,"** click on **"Get Print Preview"** then **"File"** then **"Print"** then **"OK."**

15. Submit your transcript that shows completion of all requirements to your clinical instructor or coordinator.

For assistance:

a. Call the Learning Center at 776-3267.